



# Herding Judging Program

Mattaponi Kennel Club  
(Licensed by the American Kennel Club)

Sunday | 5 November 2017  
Keepstone Farm, 412 Russell Road, Berryville, VA 22611

Show Secretary: Rachael Toren | 2023 Wells Manor Avenue, Gwynn Oak, MD 21207 | [clantyre@gmail.com](mailto:clantyre@gmail.com) | 443-253-9404

---

## Notice to Exhibitors

- **In Fall We Fall Back!** We are back to Standard Time at 2AM on 5 November, so we will be starting this trial early to beat the sunset (5:03 PM).
- LUNCH will be available.
- **PHOTOGRAPHER** :: Carl Gernazio will be onsite taking photos.
- Bitches in season shall be eligible and will be run in order in the trial classes, and will be run at the end of their class in test classes.
- Please dispose of trash in the proper manner. Bring shade, water and chair. Event will be held rain, shine, or snow.
- All dogs present which are not being worked in the arena must be kept quiet, off course, on leash and away from the fences. Please do not allow them to disturb the resting stock or interfere with the working dog.
- PLEASE NOTE: Exhibitors should follow their veterinarians' recommendation to assure their dogs are free of internal and external parasites, any communicable diseases, and have appropriate vaccinations.
- Please ensure that you have the dog at ringside when required and without being called to ensure the smooth running of the trial.
- Every effort has been made to resolve conflicts, however, if your dogs are too close for comfort, please see the scribe at the beginning of the class about moving your dog.

## Move-Ups

Requests to move up must be given to the Herding Secretary at least 30 minutes prior to the start of the event.

## Day of Show Entry – Instinct Test and Farm Dog Certification

Day of show entry will be allowed for Instinct Test and Farm Dog Certification up to the published judge limits. There is one space available in Trial 1, and three in Trial 2 for Instinct Tests. Farm Dog Certifications have additional space available.

All Day of Show entries should check in with the secretary by 10:00 AM.

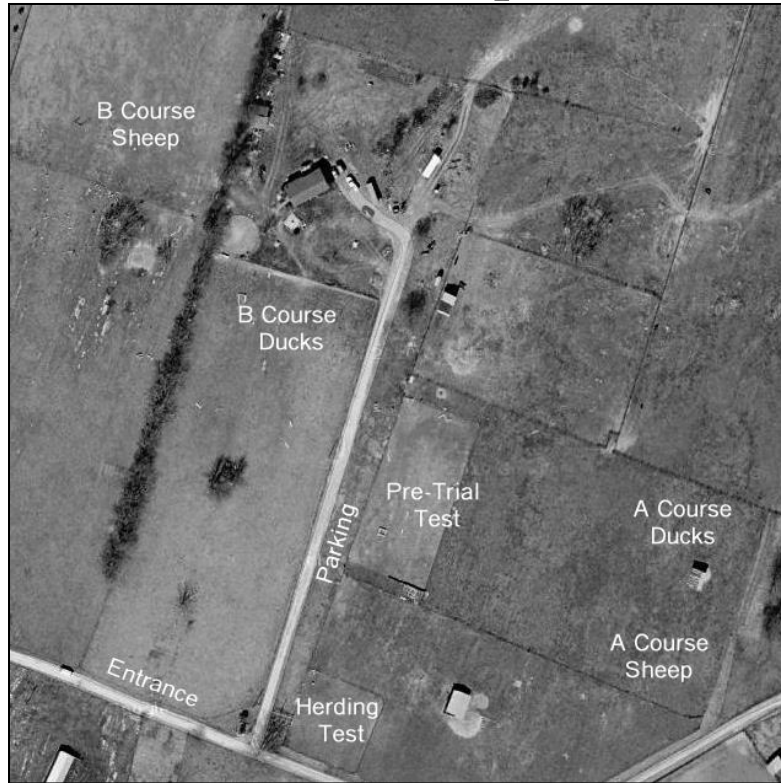
## Emergency Information

Veterinarian On Call:

Valley Emergency Veterinary Clinic  
210 Costello Drive, Winchester, VA 22601  
540-662-7811

**Directions To Valley Emergency Veterinary Clinic:** Turn right on Va-7 W for 5.7 miles. Merge onto I-81 S. toward Roanoke (2.2 miles), merge onto US-17S/US-50E/US-522 via Exit 313A (0.3 miles). Turn right onto Front Royal Pike/US 522 (0.3 miles). Turn right onto Costello Drive.

# Field Map



## **Directions**

Keepstone Farm is located at 412 Russell Road, at Keepstone Farm in scenic Berryville, Virginia; less than a mile from Route 7 West. It is easily accessible from Northern Virginia, West Virginia and Frederick Maryland via major roadways.

From the East: From Leesburg VA, take Route 7 West. Passing 2 traffic lights after the Rt 340 exit for Berryville, turn Right on Russell Road (Rt 660).

\* Go 3/10 mile, turn Right at large Keepstone Farm sign (Dog Gone Healthy sign below). Follow farm lane to Left turn at #412, and go to end of Driveway.

From the West: From I-81, Take Exit 315, Rt 7 East at Winchester VA. Go about 6 miles, and turn Left on Russell Road (Rt 660). Follow \* directions above.

From the North: From Frederick MD, take Rt 340/15 South, bearing right on 340 South at the split. Follow 340 to Charles Town WV, and continue South on 340 to Rt 7 West at Berryville VA. Follow Rt 7 West through 2 traffic lights, to Russell Rd on right. Follow \* directions above.

From the South: From Rt 66 West - Take Rt 17 North toward Paris VA. Take 17 to traffic light, and turn Left onto Rt 50 West toward Winchester. Follow Rt 50 W to a Right turn at Rt 340 North. (Sheetz Station at light). After going through the towns of Boyce and Berryville, turn Left onto Rt 7 West. Follow \* directions above.

# SUNDAY

## **Farm Dog Certification Schedule**

\*\* Timing is contingent upon the judge's availability, as they are running dogs in the trial.

### **Trial 1**

**Judge: Sandy Getz**

11:00 AM	Front Yard	Farm Dog Certification	6	1000-1005
----------	------------	------------------------	---	-----------

### **Trial 2**

**Judge: Cathie Skoog**

12:00 PM	Front Yard	Farm Dog Certification	3	1001, 1002, 1004
----------	------------	------------------------	---	------------------

# SUNDAY

For your convenience, totals have been carefully tabulated. Neither the club nor the show secretary assumes responsibility for absolute accuracy. Running order is as listed, with the first handlers' meeting occurring no earlier than the posted time. Judging will begin immediately after the handlers' meeting. Times listed are the earliest times the class may start.

\*\* Both trials will run in **forwards** numerical order, with offset starting points. Dogs have the same armband numbers for both trials.

## Trial 1

Judge: Barbara Lockard

There are 44 dogs entered in this trial, with 55 total entries. (Event #2017093409)

**# of Advanced Dogs entered: 11**

7:15 AM		<i>Advanced Duck Handler Meeting</i>		
7:30 AM (24 entries)	Arena D	Advanced A Ducks	7	670-676
		Intermediate A Ducks	4	650-651, 653-654
		Started A Ducks	7	600-602, 604-607
	Arena B	Advanced B Sheep	1	770
		Intermediate B Sheep	1	750
		Started B Sheep	2	700-701
** Expected Lunch **				
12:00 PM (25 entries)	Round Pen	Instinct Test	3	100-101, 103
	HT	Herding Test	2	200-201
	PT	Pre-Trial Test	1	300
	Arena A	Advanced A Cattle	1	570
		Advanced A Sheep	6	470-475
		Intermediate A Sheep	4	450-453
		Started A Sheep	10	400-404, 406-410

## Trial 2

Judge: Louis Thompson

There are 38 dogs entered in this trial, with 50 total entries. (Event #2017093410)

**# of Advanced Dogs entered: 11**

7:15 AM		<i>Advanced Cattle Handler Meeting</i>		
7:30 AM (25 entries)	Arena A	Advanced A Cattle	1	570
		Intermediate A Sheep*	3	452-453, 451
		Advanced A Sheep	6	473-475, 470-472
		Started A Sheep	11	405-410, 400-404
	Round Pen	Instinct Test	1	102
	HT	Herding Test	2	201, 200
	PT	Pre-Trial Test	1	300
** Expected Lunch **				
12:00 PM (22 entries)	Arena B	Advanced B Sheep	1	770
		Intermediate B Sheep	1	750
		Started B Sheep	3	701-702, 700
	Arena D	Intermediate B Ducks	1	800
	Arena D	Advanced A Ducks	7	673-676, 670-672
		Intermediate A Ducks	2	653, 651
		Started A Ducks	7	604-607, 600-602

\* In Trial 2, Intermediate Sheep will run before Advanced to avoid conflicts with Trial 1 Advanced A Ducks.