

Herding Judging Program

American Belgian Malinois Club

(Member of the American Kennel Club)



Friday & Saturday, September 25 & 26, 2015
Keepstone Farm, 412 Russell Road, Berryville, VA 22611

Trial Secretary: Rhonda Toren, 5474 Delphinium Court, Columbia, MD 21045 | herding@clantyre.net | 410-997-3698

Notice to Exhibitors

- Bitches in season shall be eligible and will be run in order in the trial classes, and will be run at the end of their class in test classes.
- Please dispose of trash in the proper manner. Bring shade, water and chair. Event will be held rain, shine, or snow.
- All dogs present which are not being worked in the arena must be kept quiet, off course, on leash and away from the fences. Please do not allow them to disturb the resting stock or interfere with the working dog.
- PLEASE NOTE: Exhibitors should follow their veterinarians' recommendation to assure their dogs are free of internal and external parasites, any communicable diseases, and have appropriate vaccinations.
- Judges are not required to wait for dogs. It is the responsibility of the owner/handler to have the dog at ringside when required and without being called. HOWEVER, we fully understand that this style of trial will cause exhibitors with multiple dogs in multiple classes to have conflicts. Please check in with the judge for each class and let them know if you have a conflict. We will try to help you work it out, within reason. ☺

Day of Show Herding Instinct Tests

Day of Show Instinct tests will be available until the judge's limits have been reached (50 runs per day), and up until 3:00 PM.

Please see the secretary by 2:30 PM to take advantage of day of show entries. Spaces are first come, first served

Move-Ups

Requests to move up must be given to the Herding Secretary at least 30 minutes prior to the start of the event. There will be no move-ups between Trial 1 and Trial 2 or vice versa. Only day-to-day move-ups will be allowed.

Emergency Information

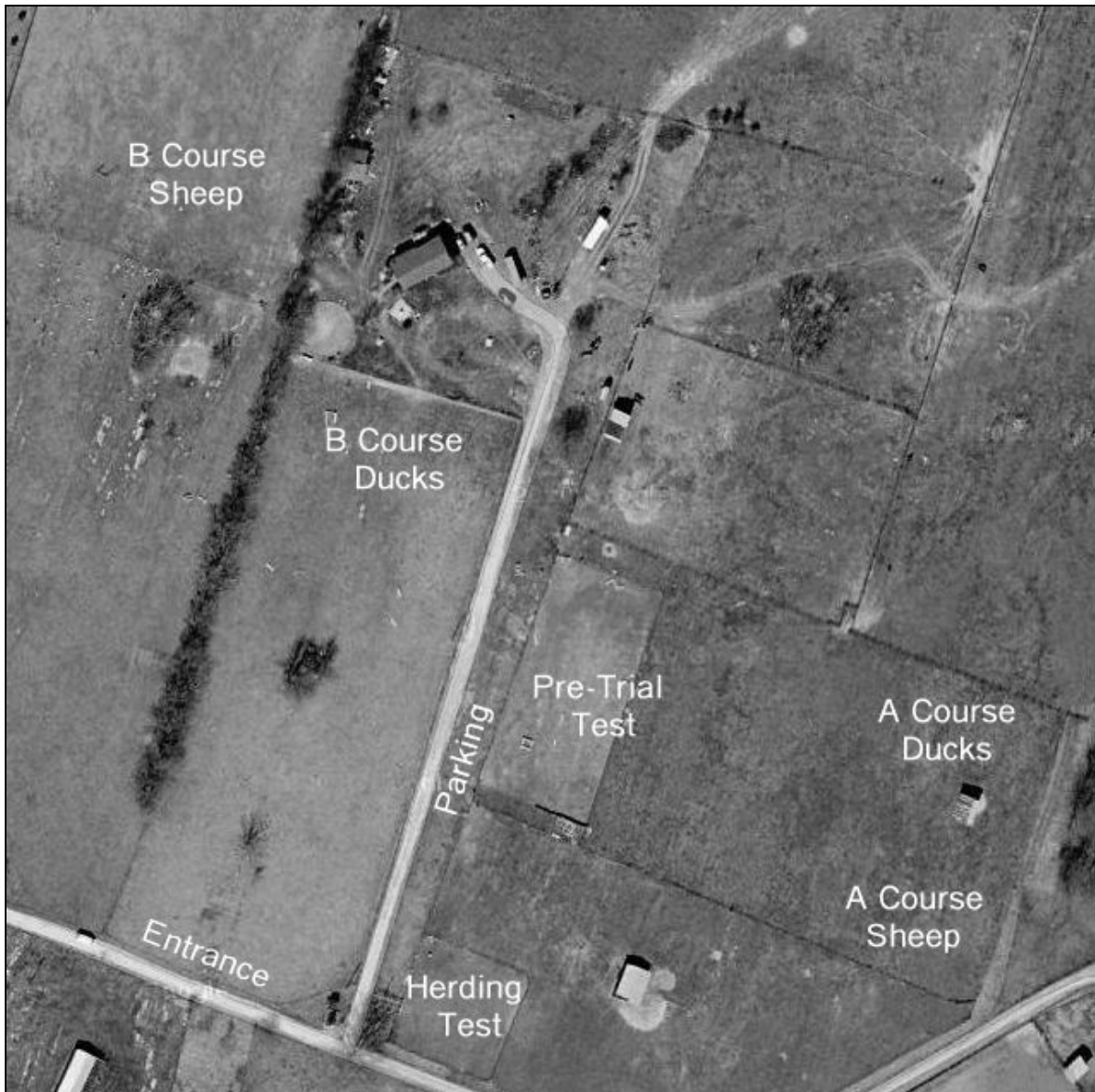
Veterinarian On Call:

After Hours Emergency Animal Clinic

Valley Emergency Veterinary Clinic
146 Garber Lane, Winchester, VA 22601

Directions To Valley Emergency Veterinary Clinic: Turn right on Va-7 W for 5.7 miles. Merge onto I-81 S. toward Roanoke (2.2 miles), merge onto US-17S/US-50E/US-522 via Exit 313A (0.3 miles). Turn right onto Front Royal Pike/US 522 (0.3 miles). Turn right onto Garber Road.

Field Map



Directions

Keepstone Farm is located at 412 Russell Road, at Keepstone Farm in scenic Berryville, Virginia; less than a mile from Route 7 West. It is easily accessible from Northern Virginia, West Virginia and Frederick Maryland via major roadways.

From the East: From Leesburg VA, take Route 7 West. Passing 2 traffic lights after the Rt 340 exit for Berryville, turn Right on Russell Road (Rt 660).

* Go 3/10 mile, turn Right at large Keepstone Farm sign (Dog Gone Healthy sign below). Follow farm lane to Left turn at #412, and go to end of Driveway.

From the West: From I-81, Take Exit 315, Rt 7 East at Winchester VA. Go about 6 miles, and turn Left on Russell Road (Rt 660). Follow * directions above.

From the North: From Frederick MD, take Rt 340/15 South, bearing right on 340 South at the split. Follow 340 to Charles Town WV, and continue South on 340 to Rt 7 West at Berryville VA. Follow Rt 7 West through 2 traffic lights, to Russell Rd on right. Follow * directions above.

From the South: From Rt 66 West - Take Rt 17 North toward Paris VA. Take 17 to traffic light, and turn Left onto Rt 50 West toward Winchester. Follow Rt 50 W to a Right turn at Rt 340 North. (Sheetz Station at light). After going through the towns of Boyce and Berryville, turn Left onto Rt 7 West. Follow * directions above.

Friday, September 25, 2015

For your convenience, totals have been carefully tabulated. Neither the club nor the show secretary assumes responsibility for absolute accuracy.

Classes will be judged in the following order, the first handlers' meeting in each trial starting at 7:45 AM. A handlers' meeting will take place prior to the start of each class, judging will begin immediately following the handlers' meeting. Judges will take a lunch break at their discretion. Every effort will be made to help resolve conflicts, but please be sure to keep judges and their scribes notified of potential conflicts. (Thank you in advance!)

*Times listed are the earliest possible time that the handlers' meeting, followed by judging for that class will begin.

TRIAL 1

Judge: Debbie Johnson

There are 33 dogs entered in this trial, with 43 total entries. (Event #2015418223)

7:45 AM	Arena A	<u>Cattle Handlers' Meeting</u>		
8:00 AM	Arena A	Started A Cattle	2	200-201
	Arena A	Advanced A Sheep	7	170-176
		Intermediate A Sheep	3	150-152
		Started A Sheep	12	100-105, 107-111, 114
10:45 AM*	Arena D	Advanced A Ducks	3	370-372
		Intermediate A Ducks	1	351
		Started A Ducks	3	300-303
	Arena C	Advanced B Ducks	1	570
		Started B Ducks	1	500
LUNCH BREAK				
12:30 PM*	Arena B	Advanced B Sheep	1	470
		Started B Sheep	2	400
To follow B Sheep*	HT Field	Herding Test	3	702-704
	PT Field	Pre-Trial Test	2	800, 803
	Round Pen	Herding Instinct Test	2	600-601

TRIAL 2

Judge: Roy Johnson

There are 33 dogs entered in this trial, with 38 total entries. (Event #2015418224)

7:45 AM	Arena D	<u>Duck Handlers' Meeting</u>		
8:00 AM	Arena D	Advanced A Ducks	3	370-372
		Intermediate A Ducks	1	351
		Started A Ducks	3	300, 302-303
	Arena C	Advanced B Ducks	1	570
9:00 AM*	Arena B	Advanced B Sheep	1	470
	HT Field	Herding Test	5	701-704, 700
	PT Field	Pre-Trial Test	3	800, 803, 805
	Round Pen	Herding Instinct Test	1	600
10:30 AM*	Arena A	Started A Sheep	11	103-105, 107-111, 114, 100, 102
LUNCH BREAK				
To follow Lunch Break		Intermediate A Sheep	3	150-152
		Advanced A Sheep	6	171, 173-176, 170

Saturday, September 26, 2015

For your convenience, totals have been carefully tabulated. Neither the club nor the show secretary assumes responsibility for absolute accuracy.

Classes will be judged in the following order, the first handlers' meeting in each trial starting at 7:45 AM. A handlers' meeting will take place prior to the start of each class, judging will begin immediately following the handlers' meeting. Judges will take a lunch break at their discretion. Every effort will be made to help resolve conflicts, but please be sure to keep judges and their scribes notified of potential conflicts. (Thank you in advance!)

*Times listed are the earliest possible time that the handlers' meeting, followed by judging for that class will begin.

TRIAL 1

Judge: Debbie Johnson

There are 29 dogs entered in this trial, with 34 total entries. (Event #2015418241)

7:45 AM	Arena A	<u>Cattle Handlers' Meeting</u>		
8:00 AM	Arena A	Started A Cattle	1	200
	Arena A	Advanced A Sheep	6	173-176, 170-171
		Intermediate A Sheep	3	150-152
		Started A Sheep	9	110-114, 104, 106, 108-109
10:30 AM*	Arena D	Advanced A Ducks	3	370-372
		Intermediate A Ducks	2	350-351
		Started A Ducks	2	302-303
	Arena C	Advanced B Ducks	1	570
	Arena B	Advanced B Sheep	1	470
LUNCH BREAK				
12:30 PM*	HT Field	Herding Test	2	700, 703
	PT Field	Pre-Trial Test	3	801-802, 804
	Round Pen	Herding Instinct Test	1	602

TRIAL 2

Judge: Roy Johnson

There are 30 dogs entered in this trial, with 38 total entries. (Event #2015418242)

7:45 AM	Arena D	<u>Duck Handlers' Meeting</u>		
8:00 AM	Arena D	Advanced A Ducks	3	370-372
		Intermediate A Ducks	2	350-351
		Started A Ducks	3	301-303
	Arena C	Advanced B Ducks	1	570
		Started B Ducks	1	500
9:15 AM*	Arena B	Advanced B Sheep	1	470
		Started B Sheep	1	400
	HT Field	Herding Test	2	701, 703
	PT Field	Pre-Trial Test	3	801, 804-805
	Round Pen	Herding Instinct Test	1	601
10:30 AM*	Arena A	Started A Cattle	1	201
	Arena A	Started A Sheep	10	111-114, 100-101, 104, 106, 108-109
LUNCH BREAK				
To follow Lunch Break		Advanced A Sheep	6	174-176, 170-171, 173
		Intermediate A Sheep	3	150-152